

TPI Extra High Bond adhesive cement for very large tiles (Marbletiles and Granite tiles)

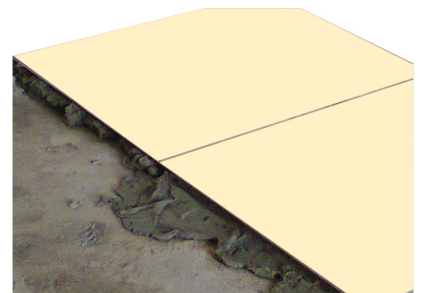
M503



Instruction of preparation and application

- Clean the substrate surface to until free from all dirt, oil, chemicals, color stain, dust and any other contaminates which can effect to the bonding adhesive strength of mortar. Before tiling, make sure existing condition of substrate surface is suitable. Otherwise, the wall must firstly be repaired.
- Mix 1 bag (5 kg) TPI M503 (Extra High Bond Adhesive Mortar) with 0.9-1 liter of clean water until the mixture is homogenous. Apply the mixture a 5mm thick layer on the required surface. Then use a notched trowel at 45 degree angle to comb the mixture from the surface and drag it to create ridges and grooves.
- Lay tiles onto the substrate then press or use the rubber hammer to tap each tile firmly.
- Align the tiles as required and clean excess adhesive from tiles and joints before it sets.

Thickness of TPI M503 (mm.)	Area to work (sg.m.)per cement (20kg.)	Amount of cement for 1 sg.m in. area (kg)
5	8	2.5



Suitable for laying large tiles, Marble and Granite tiles with extra High Adhesive Strength and long lasting life.