

# Dry Concrete 240 KSC Cylinder (or 280 KSC Cube) M402



**Convenient**  
**Saves Time**  
**Strong**

## Post - Lintel and Car park

### Instruction for mortar preparation

1. Mix 1 bag (50kg) of TPI M 402 with 7-8 liters of clean water.
2. Mix well until the mixture is homogeneous, and apply according to the common practices for concrete work.
3. In case a special concrete mix with desired properties is required by addition of admixtures, then user can add the additives according to the ratio and procedures given by the manufacturer of the additive.

### Product Characteristic

This mortar product is suitable for concrete work after mixing with recommended ratio with water, it can be used without any other additives and the concrete work will have compressive strength of minimum 240 KSC.

### Application

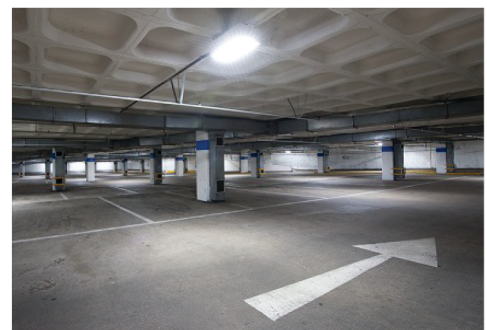
Suitable for common small concrete works such as ground leveling, post – lintel, pathway, car park etc.

### Quantities

Mixing ratio per bag	Amount per cubic meter
TPI M402 1 bag (50 kg)	TPI M402 45 bag (2,250 kg)
Water 7-8 liters	Water 315-360 liters

Quantities: In case of mixing with stone size 1/2' or 3/4'

Mixing ratio per bag	Amount per cubic meter
TPI M402 1 bag (50 kg)	TPI M402 30 bag (1,500 kg)
Stone size 1/2' or 3/4' 30 kg (3 buckets)	Stone size 1/2' or 3/4' 900 kg (90 buckets)
Water 7-8 liters	Water 210-240 liters



**Suitable for Post and Lintel at compressive strength 240 KSC cylinder  
(or 280 KSC Cube)**